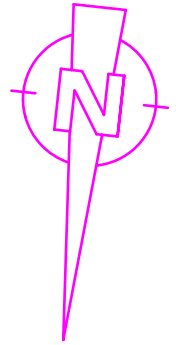
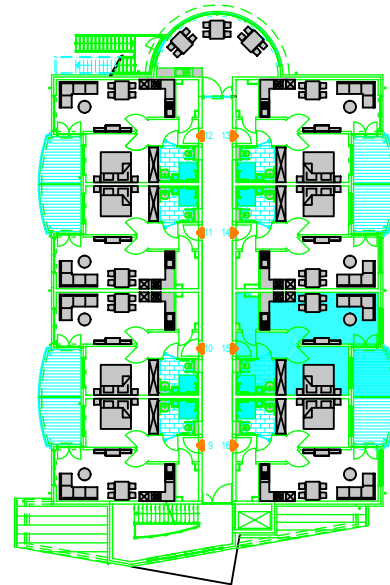


# Evangelische Altenhilfe Much-Seelscheid

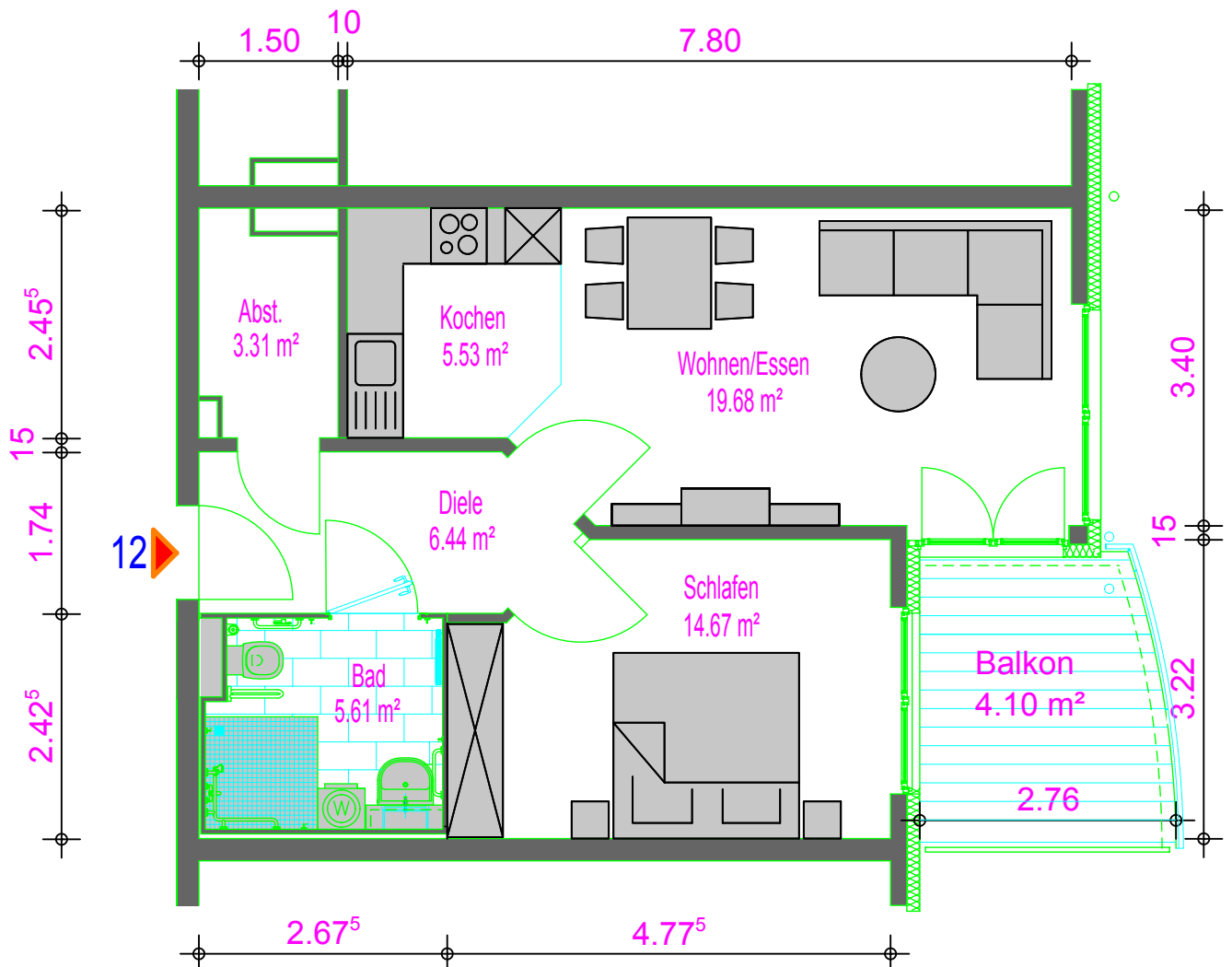
## Betreutes Wohnen - Neubau -



### - 1.OG - Wohnung 12

Wohnfläche = 59,34 m<sup>2</sup>

1.Obergeschoss  
8 Wohnungen



53819 Neunkirchen-Seelscheid, Am Graspark 20